

# A2 size 單色印刷 80磅模造紙

594mm

420mm



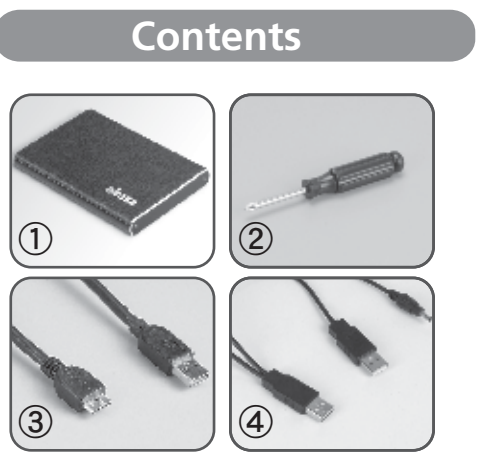
**akasa elite S**  
leather finish aluminium enclosure  
USER Manual GB FR DE IT ES  
Akasa Company Notice  
The information contained in this document is subject to change without notice. All rights reserved. Reproduction, adaptation, or translation of this material is prohibited without prior written permission of Akasa, except as allowed under copyright laws. Akasa shall not be liable for technical or editorial errors.  
Copyright © 2010 Akasa Co., Ltd.  
Microsoft, Windows, Windows 2000, XP, VISTA / 7, are registered trademarks of Microsoft Corporation. Mac and Apple are the registered trademarks of Apple Computer, Inc. Adobe and Acrobat are trademarks of Adobe Systems Incorporation. General Notice: Other product names used herein are for identification purposes only and may be trademarks of their respective owners. Akasa disclaims any and all rights in those marks.  
FCC Compliance Statement  
This device complies with Part 15 of the FCC Rules. Operation is subject to the following two conditions:  
1. This device may not cause harmful interference.  
2. This device must accept any interference received, including interference that may cause undesired operation.  
Safety  
Packaging complies with RoHS Directive  
Packaging complies with RoHS Directive

**Pre-Installation**  
CAUTION  
Electrostatic discharge (ESD) can damage PC components. If an ESD controlled workstation is not available, wear an anti-static wrist strap or touch the earthed surface before handling the HDD. Changes or modifications not expressly approved by the party responsible for compliance could void the user's authority to operate the equipment.  
Warranty  
Warranties extend only to defects that occur during normal use and do not extend to damage to products that results from incompatibility, abuse, misconfiguration, incorrect voltage supply, air/water pollution, any accident or natural disaster. The warranty extends only on Akasa enclosure and does not cover a defective HDD, motherboard etc. as a result of a defective enclosure or power adapter. Keep your original sales receipt in a safe place. Nothing herein should be construed as constituting an additional warranty.  
ATTENTION  
Une décharge électrostatique (ESD) peut endommager les composants du PC. Si une station de travail protégée contre les décharges électrostatiques n'est disponible, portez un bracelet antistatique ou touchez une surface reliée à la masse avant de manipuler le disque dur. Des changements ou des modifications qui ne sont pas expressément approuvés par les parties responsables de la conformité de l'appareil peuvent invalider l'emballage de l'autorité de l'utilisateur pour l'utilisation de cet appareil.

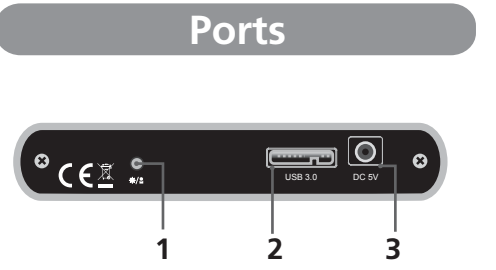
**Garantie**  
Las garantías no cubren que los defectos que surjian durante una utilización normal e no se aplican por los daños de productos resultantes de incompatibilidad, abuso, mala utilización, negligencia, separación no autorizada, modificación, mala instalación, error de alimentación, contaminación de los líquidos, accidentes o de catástrofes naturales. La garantía no cubre que los componentes de terceros, como un disco duro, tarjeta de vídeo, tarjeta de sonido, placa madre, etc. como resultado de un fallo en el disco duro o placa madre, etc. como resultado de un fallo en el adaptador de energía defectuoso. Guarde su recibo original de compra en un sitio seguro. Nada de lo que se menciona, debe ser considerado como una garantía adicional.

**Garantie**  
Die Garantie erstreckt sich nur auf Defekte die sich durch die normale Benutzung ergeben und nicht auf Beschädigungen, die durch Inkompatibilität, missbrauch, falsche Nutzung, Fahrlässigkeit, feuchte Montage, falsche Stromzufuhr, Luft/Wasser Verschmutzung, Unfall oder durch eine natürliche Katastrophe entstehen. Die Garantie erstreckt sich nur auf das Akasa-Gehäuse und gilt nicht für ein defektes Festplattenlaufwerk, Motherboard usw., im Folge eines defekten Geäts oder Stromadapters. Bewahren Sie Ihren originalen Kassenzettel an einem sicheren Ort auf. Kenne der hier enthaltenen Garantieangaben deuten auf eine Zusatzgarantie hin.

**PRECAUCIÓN**  
Las descargas electrostáticas (ESD) pueden dañar los componentes de la PC. Si no está disponible una estación de trabajo con control de ESD, use una muñequera antistática toque una superficie que haga tierra antes de manipular el Disco Duro. Los cambios o modificaciones no aprobados expresamente por la parte responsable del cumplimiento de requisitos al usuario a operar este equipo.  
**GABARITIA**  
La garantía cubre solo defectos ocurridos durante el uso normal del equipo y no se extiende a fallas en el producto producidas como resultado de incompatibilidad, abuso, uso inadecuado, negligencia, reparaciones no autorizadas, modificaciones, instalación incorrecta, alimentación de voltaje inadecuado, contaminación de agua o aire, cualquier accidente o desastre natural. La garantía se extiende sólo sobre el gabinete Akasa y no cubre fallas en el disco duro o placa madre, etc. como resultado de una caja o adaptador de energía defectuosa. Guarde su recibo original de compra en un sitio seguro. Nada adicional a este documento podrá ser usado como garantía adicional.



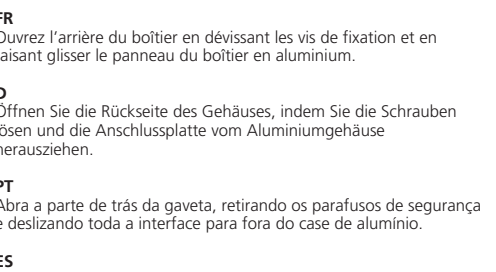
**Contents**  
1. élite S 2.5" SATA enclosure 2. screwdriver  
3. USB Data and power cable 4. USB-to-DC power cable  
FR 1. Boîtier SATA 2,5 pouces élite S 2. tournevis  
3. Câble de données et d'alimentation USB 4. Câble d'alimentation USB-vers-DC  
D 1. élite S 2,5"-SATA-Gehäuse 2. Schraubendreher  
3. USB-Datenkabel und Netzkabel 4. USB-auf-DC-Netzkabel  
PT 1. Gaietva SATA 2.5" élite S 2. chave de fenda  
3. Cabo USB para energia e dados 4. Cabo de energia USB-to-DC  
ES 1. Carcasa élite S SATA de 2.5" 2. destornillador  
3. Cable de corriente y datos USB 4. Cable de corriente USB-a-DC



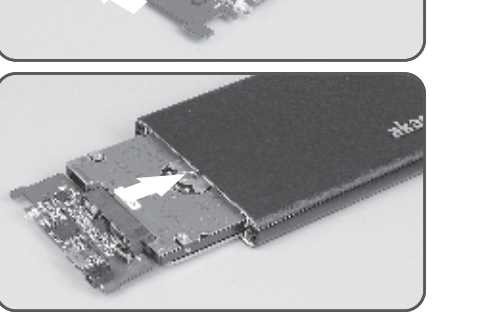
**Ports**  
GB LED indicator 2. Port USB3.0 3. Entrada DC 5V  
FR ARRANGEMENT DU PANNEAU ARRIERE  
1. Indicateur DEL 2. Port USB3.0 3. Entrée Alimentation 5V CC  
D ANSCHLÜSSE AN DER RÜCKSEITE  
1. LED-Anzeige 2. USB-3-Anschluss 3. DC-5V-Stromzufuhr  
PT DISPOSITIVO PAINEL TRASEIRO  
1. Indicador LED 2. Porta USB3.0 3. Entrada DC 5V  
ES DISTRIBUCIÓN DEL PANEL POSTERIOR  
1. Indicador LED 2. Puerto USB3.0 3. Entrada de energía DC 5V



**HDD Installation**  
1. Push the HDD fully inside until it is flush with the housing.  
NOTE: Ensure the interface board fits into the housing groove. If it does not fit correctly, it is probably inserted upside down.  
FR Poussez complètement le disque dur à l'intérieur jusqu'à ce qu'il s'encastra dans le boîtier. REMARQUE: Assurez-vous que le panneau d'interface s'insère dans la rainure du boîtier. Si il ne s'insère pas correctement, c'est qu'il est probablement inséré à l'envers.  
D Drücken Sie die Festplatte so weit in das Gehäuse, bis sie mit der Kante des Gehäuses abweicht. HINWEIS: Stellen Sie sicher, dass die Schnittstellenkarte in die dafür vorgesehene Gehäuseleiste passt. Andernfalls wurde sie möglicherweise falsch herum eingesetzt.  
PT Logo que os drives estejam instalados o HD externo estará pronto para ser usado. Para acessar o HD clique duas vezes neste ícone.  
NOTA: Se o HD instalado não funcionar por novo é necessário que o mesmo seja formatado, para se tornar acessível.  
ES Presione el disco duro hasta el fondo hasta que coincida con la carcasa. NOTA: Asegúrese de que la placa de la interfaz quede ajustada en el hueco de la carcasa.  
Si no encaja bien, probablemente este insertada al revés.

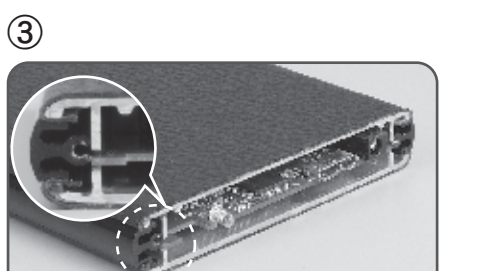


**USB Connection**  
1. Connect the other end of the USB cable into the USB port of your élite S enclosure. The LED should light up. Windows or MAC operating system will search for and install the driver automatically.  
FR Branchez le connecteur de Type A du câble USB (partie 3) à n'importe quel port USB disponible sur le PC ou le MAC. REMARQUE: Four d'attendre la vitesse de transfert maximum, un système avec port USB 3.0 est nécessaire.  
D Verbinden Sie den Typ A Stecker des USB Kabels in einen freien USB-Anschluss des PCs oder MAC's.  
HINWEIS: Ein System mit einem USB 3.0 Port an notwendig um die maximale Datentransferanz zu erreichen.  
PT Conecte o conector Tipo A do cabo USB (parte 3) em qualquer porta USB do PC ou MAC. NOTA: Para obter a máxima velocidade de transferência é necessário um sistema com porta USB 3.0.  
ES Conecte el conector Tipo A del cable USB (parte 3) en un puerto USB disponible en el PC o MAC. NOTA: Para obtener la máxima velocidad de transferencia de datos, necesita un sistema con puerto USB 3.0



**GB** Line-up the connectors and gently insert the interface board onto the 2.5" SATA hard drive until the connection is secure. Insert the assembled HDD and interface board into the housing in the direction shown on the picture below.  
**FR** Aligner les connecteurs et insérez doucement le panneau d'interface sur le disque SATA 2,5 pouces jusqu'à ce que la connexion soit bien faite. Insérez le disque dur assemblé et le panneau d'interface dans le boîtier dans la direction indiquée sur l'illustration ci-dessous.  
**D** Richten Sie die Anschlüsse aus, und setzen Sie die Schnittstellenkarte vorsichtig auf die 2.5"-SATA-Festplatte. Setzen Sie nun die Festplatte mit der Schnittstellenkarte in der unten dargestellten Richtung in das Gehäuse ein.  
**PT** Alinhoe os conectores e gentilmente insira a placa de interface sobre o HDD 2.5" SATA até que a conexão esteja segura. Insira todo o conjunto no caso conforme indica a imagem abaixo.  
**ES** Alinee los conectores e inserte con cuidado la placa de la interfaz sobre el disco duro SATA de 2.5" hasta que la conexión sea segura. Inserte el disco duro montado y la placa de la interfaz en la carcasa en la dirección mostrada en la imagen siguiente.

**GB** Connect the other end of the USB cable into the USB port of your élite S enclosure. The LED should light up. Windows or MAC operating system will search for and install the driver automatically.  
**FR** Branchez l'autre extrémité du câble USB au port USB de votre boîtier élite S. La DEL devrait s'allumer. Le système d'exploitation Windows ou MAC recherchera et installera le pilote automatiquement.  
**D** Schließen Sie das andere Ende des USB-Kabels an den USB-Anschluss des élite-S-Gehäuses an. Die LED beginnt zu leuchten. Das Betriebssystem Windows oder MAC sucht und installiert den Treiber automatisch.  
**PT** Conecte a outra extremidade do cabo USB na porta USB de sua gaietva élite S. O LED deve acender. O sistema operacional Windows ou Mac deverá reconhecer e instalar o driver automaticamente.  
**ES** Conecte el otro extremo del cable USB al puerto USB de su unidad de disco duro élite S. La LED debería encenderse. El sistema operativo Windows o Mac buscará e instalará el driver automáticamente.



**GB** Push the HDD fully inside until it is flush with the housing. NOTE: Ensure the interface board fits into the housing groove. If it does not fit correctly, it is probably inserted upside down.  
**FR** Poussez complètement le disque dur à l'intérieur jusqu'à ce qu'il s'encastra dans le boîtier. REMARQUE: Assurez-vous que le panneau d'interface s'insère dans la rainure du boîtier. Si il ne s'insère pas correctement, c'est qu'il est probablement inséré à l'envers.  
**D** Drücken Sie die Festplatte so weit in das Gehäuse, bis sie mit der Kante des Gehäuses abweicht. HINWEIS: Stellen Sie sicher, dass die Schnittstellenkarte in die dafür vorgesehene Gehäuseleiste passt. Andernfalls wurde sie möglicherweise falsch herum eingesetzt.  
**PT** Logo que os drives estejam instalados o HD externo estará pronto para ser usado. Para acessar o HD clique duas vezes neste ícone.  
NOTA: Se o HD instalado não funcionar por novo é necessário que o mesmo seja formatado, para se tornar acessível.  
**ES** Presione el disco duro hasta el fondo hasta que coincida con la carcasa. NOTA: Asegúrese de que la placa de la interfaz quede ajustada en el hueco de la carcasa.  
Si no encaja bien, probablemente este insertada al revés.

**D** Drücken Sie die Festplatte so weit in das Gehäuse, bis sie mit der Kante des Gehäuses abweicht. HINWEIS: Stellen Sie sicher, dass die Schnittstellenkarte in die dafür vorgesehene Gehäuseleiste passt. Andernfalls wurde sie möglicherweise falsch herum eingesetzt.  
**PT** Logo que os drives estejam instalados o HD externo estará pronto para ser usado. Para acessar o HD clique duas vezes neste ícone.  
NOTA: Se o HD instalado não funcionar por novo é necessário que o mesmo seja formatado, para se tornar acessível.  
**ES** Presione el disco duro hasta el fondo hasta que coincida con la carcasa. NOTA: Asegúrese de que la placa de la interfaz quede ajustada en el hueco de la carcasa.  
Si no encaja bien, probablemente este insertada al revés.

**GB** NOTE: Should the hard drive inside the enclosure fail to spin up or your system hasn't recognized it, you may need to use the additional USB-to-DC cable (part 4) for extra power. Connect the other end of the USB-to-DC cable into any USB port on the system and the other end to the DC 5V port of your élite S enclosure.  
**FR** REMARQUE : Si le disque dur à l'intérieur du boîtier ne tourne pas ou si votre système ne l'a pas reconnu, vous devez peut-être utiliser le câble USB-vers-DC supplémentaire (partie 4) pour avoir plus de puissance. Branchez l'autre extrémité du câble USB-vers-DC à un port USB sur le système et l'autre extrémité à la prise DC 5V port de votre boîtier élite S.  
**D** HINWEIS: Sollte die Festplatte im externen Gehäuse nicht schalten anlaufen oder Ihr System erkennt diese nicht so müssen Sie möglicherweise das zusätzliche USB zu DC Kabel (Teil 4) für mehr Energie verwenden. Verbinden Sie den USB Stecker des Kabels mit einem freien USB-Anschluss des Computers und das andere Ende mit dem 5V DC Anschluss Ihres élite S Gehäuses.  
**PT** NOTA: Caso o HD no interior da gaietva não funcione ou seu sistema não o reconheça, você deve usar o cabo USB-vers-DC (parte 4) para uma alimentação extra. Conecte a outra extremidade do cabo USB-vers-DC em qualquer porta USB do sistema e a outra extremidade na porta DC 5V da gaietva élite S.  
**ES** NOTA: Si la unidad de disco duro del interior de la carcasa no gira o su sistema no la reconoce, puede que necesite utilizar un cable adicional USB a DC (parte 4) para obtener más corriente. Conecte el otro extremo del cable USB a DC en cualquier puerto USB de su sistema y el otro extremo en el puerto DC 5V de su carcasa élite S.

**GB** Secure the enclosure backplate to the housing using the screws provided.  
**FR** Fixez la platine arrière du boîtier en utilisant les vis fournies.  
**D** Schrauben Sie die Rückwand wieder am Gehäuse fest.  
**PT** Fixe o painel frontal ao case utilizando os parafusos fornecidos.  
**ES** Secure the enclosure backplate to the housing using the screws provided.

**MS Windows**  
1. Double click on the [Flèche Débrancher ou Ejecter le matériel] dans la barre d'état. Une boîte de dialogue apparaît sur la droite.  
2. Mettez en surbrillance [Périphérique de stockage de masse USB] dans la boîte de dialogue, cliquez sur [Arrêter], choisissez le Lecteur externe USB2.0 que vous voulez déconnecter, puis cliquez à nouveau sur [Arrêter] sur l'écran suivant.  
3. Attendez quelques secondes, le système affiche "Vous pouvez déconnecter le périphérique en toute sécurité".  
4. Vous pouvez maintenant débrancher en toute sécurité le câble de données USB du port USB de l'ordinateur / boîtier.  
**MAC OS**  
1. Cliquez sur l'icône [Flèche Débrancher ou Ejecter le matériel] dans la barre d'état. Une boîte de dialogue apparaît sur la droite.  
2. Sélectionnez [Dispositif de stockage de masse USB] dans la boîte de dialogue, cliquez sur [Arrêter], choisissez le lecteur externe USB2.0 que vous voulez déconnecter, puis cliquez sur [Arrêter] sur l'écran suivant.  
3. Attendez quelques secondes, le système affiche "Vous pouvez déconnecter le périphérique en toute sécurité".  
4. Vous pouvez maintenant débrancher en toute sécurité le câble de données USB du port USB de l'ordinateur / boîtier.  
**FR** Cliquez sur l'icône [Flèche Débrancher ou Ejecter le matériel] dans la barre d'état. Une boîte de dialogue apparaît sur la droite.  
2. Sélectionnez [Dispositif de stockage de masse USB] dans la boîte de dialogue, cliquez sur [Arrêter], choisissez le lecteur externe USB2.0 que vous voulez déconnecter, puis cliquez sur [Arrêter] sur l'écran suivant.  
3. Attendez quelques secondes, le système affiche "Vous pouvez déconnecter le périphérique en toute sécurité".  
4. Vous pouvez maintenant débrancher en toute sécurité le câble de données USB du port USB de l'ordinateur / boîtier.  
**MAC OS**  
1. Cliquez sur l'icône [Flèche Débrancher ou Ejecter le matériel] dans la barre d'état. Une boîte de dialogue apparaît sur la droite.  
2. Sélectionnez [Dispositif de stockage de masse USB] dans la boîte de dialogue, cliquez sur [Arrêter], choisissez le lecteur externe USB2.0 que vous voulez déconnecter, puis cliquez sur [Arrêter] sur l'écran suivant.  
3. Attendez quelques secondes, le système affiche "Vous pouvez déconnecter le périphérique en toute sécurité".  
4. Vous pouvez maintenant débrancher en toute sécurité le câble de données USB du port USB de l'ordinateur / boîtier.

**MS Windows**  
1. Double click on the [Unplug arrow icon or Eject Hardware] icon in the system tray. Dialog box appears on the right.  
2. Highlight the [USB Mass Storage Device] in the dialog box, click on [Stop], choose the USB2.0 External Drive that you want to disconnect, then click on [Stop] again on next screen.  
3. Wait for few seconds, the system prompts "You may safely remove this device".  
4. You can now unplug the USB cable from the USB port of the computer.  
**MAC OS**  
1. Click on the [Unplug arrow icon or Eject Hardware] icon in the system tray. Dialog box appears on the right.  
2. Highlight the [USB Mass Storage Device] in the dialog box, click on [Stop], choose the USB2.0 External Drive that you want to disconnect, then click on [Stop] again on next screen.  
3. Wait for few seconds, the system prompts "You may safely remove this device".  
4. You can now unplug the USB cable from the USB port of the computer.

**MS Windows**  
1. Double click on the [Unplug arrow icon or Eject Hardware] icon in the system tray. Dialog box appears on the right.  
2. Highlight the [USB Mass Storage Device] in the dialog box, click on [Stop], choose the USB2.0 External Drive that you want to disconnect, then click on [Stop] again on next screen.  
3. Wait for few seconds, the system prompts "You may safely remove this device".  
4. You can now unplug the USB cable from the USB port of the computer.  
**MAC OS**  
1. Click on the [Unplug arrow icon or Eject Hardware] icon in the system tray. Dialog box appears on the right.  
2. Highlight the [USB Mass Storage Device] in the dialog box, click on [Stop], choose the USB2.0 External Drive that you want to disconnect, then click on [Stop] again on next screen.  
3. Wait for few seconds, the system prompts "You may safely remove this device".  
4. You can now unplug the USB cable from the USB port of the computer.

**MS Windows**  
1. Double click on the [Unplug arrow icon or Eject Hardware] icon in the system tray. Dialog box appears on the right.  
2. Highlight the [USB Mass Storage Device] in the dialog box, click on [Stop], choose the USB2.0 External Drive that you want to disconnect, then click on [Stop] again on next screen.  
3. Wait for few seconds, the system prompts "You may safely remove this device".  
4. You can now unplug the USB cable from the USB port of the computer.  
**MAC OS**  
1. Click on the [Unplug arrow icon or Eject Hardware] icon in the system tray. Dialog box appears on the right.  
2. Highlight the [USB Mass Storage Device] in the dialog box, click on [Stop], choose the USB2.0 External Drive that you want to disconnect, then click on [Stop] again on next screen.  
3. Wait for few seconds, the system prompts "You may safely remove this device".  
4. You can now unplug the USB cable from the USB port of the computer.



**MS Windows**  
1. Double click on the [Unplug arrow icon or Eject Hardware] icon in the system tray. Dialog box appears on the right.  
2. Highlight the [USB Mass Storage Device] in the dialog box, click on [Stop], choose the USB2.0 External Drive that you want to disconnect, then click on [Stop] again on next screen.  
3. Wait for few seconds, the system prompts "You may safely remove this device".  
4. You can now unplug the USB cable from the USB port of the computer.  
**MAC OS**  
1. Click on the [Unplug arrow icon or Eject Hardware] icon in the system tray. Dialog box appears on the right.  
2. Highlight the [USB Mass Storage Device] in the dialog box, click on [Stop], choose the USB2.0 External Drive that you want to disconnect, then click on [Stop] again on next screen.  
3. Wait for few seconds, the system prompts "You may safely remove this device".  
4. You can now unplug the USB cable from the USB port of the computer.

**MS Windows**  
1. Double click on the [Unplug arrow icon or Eject Hardware] icon in the system tray. Dialog box appears on the right.  
2. Highlight the [USB Mass Storage Device] in the dialog box, click on [Stop], choose the USB2.0 External Drive that you want to disconnect, then click on [Stop] again on next screen.  
3. Wait for few seconds, the system prompts "You may safely remove this device".  
4. You can now unplug the USB cable from the USB port of the computer.  
**MAC OS**  
1. Click on the [Unplug arrow icon or Eject Hardware] icon in the system tray. Dialog box appears on the right.  
2. Highlight the [USB Mass Storage Device] in the dialog box, click on [Stop], choose the USB2.0 External Drive that you want to disconnect, then click on [Stop] again on next screen.  
3. Wait for few seconds, the system prompts "You may safely remove this device".  
4. You can now unplug the USB cable from the USB port of the computer.

**MS Windows**  
1. Double click on the [Unplug arrow icon or Eject Hardware] icon in the system tray. Dialog box appears on the right.  
2. Highlight the [USB Mass Storage Device] in the dialog box, click on [Stop], choose the USB2.0 External Drive that you want to disconnect, then click on [Stop] again on next screen.  
3. Wait for few seconds, the system prompts "You may safely remove this device".  
4. You can now unplug the USB cable from the USB port of the computer.  
**MAC OS**  
1. Click on the [Unplug arrow icon or Eject Hardware] icon in the system tray. Dialog box appears on the right.  
2. Highlight the [USB Mass Storage Device] in the dialog box, click on [Stop], choose the USB2.0 External Drive that you want to disconnect, then click on [Stop] again on next screen.  
3. Wait for few seconds, the system prompts "You may safely remove this device".  
4. You can now unplug the USB cable from the USB port of the computer.

**MS Windows**  
1. Double click on the [Unplug arrow icon or Eject Hardware] icon in the system tray. Dialog box appears on the right.  
2. Highlight the [USB Mass Storage Device] in the dialog box, click on [Stop], choose the USB2.0 External Drive that you want to disconnect, then click on [Stop] again on next screen.  
3. Wait for few seconds, the system prompts "You may safely remove this device".  
4. You can now unplug the USB cable from the USB port of the computer.  
**MAC OS**  
1. Click on the [Unplug arrow icon or Eject Hardware] icon in the system tray. Dialog box appears on the right.  
2. Highlight the [USB Mass Storage Device] in the dialog box, click on [Stop], choose the USB2.0 External Drive that you want to disconnect, then click on [Stop] again on next screen.  
3. Wait for few seconds, the system prompts "You may safely remove this device".  
4. You can now unplug the USB cable from the USB port of the computer.

**MS Windows**  
1. Double click on the [Unplug arrow icon or Eject Hardware] icon in the system tray. Dialog box appears on the right.  
2. Highlight the [USB Mass Storage Device] in the dialog box, click on [Stop], choose the USB2.0 External Drive that you want to disconnect, then click on [Stop] again on next screen.  
3. Wait for few seconds, the system prompts "You may safely remove this device".  
4. You can now unplug the USB cable from the USB port of the computer.  
**MAC OS**  
1. Click on the [Unplug arrow icon or Eject Hardware] icon in the system tray. Dialog box appears on the right.  
2. Highlight the [USB Mass Storage Device] in the dialog box, click on [Stop], choose the USB2.0 External Drive that you want to disconnect, then click on [Stop] again on next screen.  
3. Wait for few seconds, the system prompts "You may safely remove this device".  
4. You can now unplug the USB cable from the USB port of the computer.

**MS Windows**  
1. Double click on the [Unplug arrow icon or Eject Hardware] icon in the system tray. Dialog box appears on the right.  
2. Highlight the [USB Mass Storage Device] in the dialog box, click on [Stop], choose the USB2.0 External Drive that you want to disconnect, then click on [Stop] again on next screen.  
3. Wait for few seconds, the system prompts "You may safely remove this device".  
4. You can now unplug the USB cable from the USB port of the computer.  
**MAC OS**  
1. Click on the [Unplug arrow icon or Eject Hardware] icon in the system tray. Dialog box appears on the right.  
2. Highlight the [USB Mass Storage Device] in the dialog box, click on [Stop], choose the USB2.0 External Drive that you want to disconnect, then click on [Stop] again on next screen.  
3. Wait for few seconds, the system prompts "You may safely remove this device".  
4. You can now unplug the USB cable from the USB port of the computer.

**MS Windows**  
1. Double click on the [Unplug arrow icon or Eject Hardware] icon in the system tray. Dialog box appears on the right.  
2. Highlight the [USB Mass Storage Device] in the dialog box, click on [Stop], choose the USB2.0 External Drive that you want to disconnect, then click on [Stop] again on next screen.  
3. Wait for few seconds, the system prompts "You may safely remove this device".  
4. You can now unplug the USB cable from the USB port of the computer.  
**MAC OS**  
1. Click on the [Unplug arrow icon or Eject Hardware] icon in the system tray. Dialog box appears on the right.  
2. Highlight the [USB Mass Storage Device] in the dialog box, click on [Stop], choose the USB2.0 External Drive that you want to disconnect, then click on [Stop] again on next screen.  
3. Wait for few seconds, the system prompts "You may safely remove this device".  
4. You can now unplug the USB cable from the USB port of the computer.

**MS Windows**  
1. Double click on the [Unplug arrow icon or Eject Hardware] icon in the system tray. Dialog box appears on the right.  
2. Highlight the [USB Mass Storage Device] in the dialog box, click on [Stop], choose the USB2.0 External Drive that you want to disconnect, then click on [Stop] again on next screen.  
3. Wait for few seconds, the system prompts "You may safely remove this device".  
4. You can now unplug the USB cable from the USB port of the computer.  
**MAC OS**  
1. Click on the [Unplug arrow icon or Eject Hardware] icon in the system tray. Dialog box appears on the right.  
2. Highlight the [USB Mass Storage Device] in the dialog box, click on [Stop], choose the USB2.0 External Drive that you want to disconnect, then click on [Stop] again on next screen.  
3. Wait for few seconds, the system prompts "You may safely remove this device".  
4. You can now unplug the USB cable from the USB port of the computer.

**MS Windows**  
1. Double click on the [Unplug arrow icon or Eject Hardware] icon in the system tray. Dialog box appears on the right.  
2. Highlight the [USB Mass Storage Device] in the dialog box, click on [Stop], choose the USB2.0 External Drive that you want to disconnect, then click on [Stop] again on next screen.  
3. Wait for few seconds, the system prompts "You may safely remove this device".  
4. You can now unplug the USB cable from the USB port of the computer.  
**MAC OS**  
1. Click on the [Unplug arrow icon or Eject Hardware] icon in the system tray. Dialog box appears on the right.  
2. Highlight the [USB Mass Storage Device] in the dialog box, click on [Stop], choose the USB2.0 External Drive that you want to disconnect, then click on [Stop] again on next screen.  
3. Wait for few seconds, the system prompts "You may safely remove this device".  
4. You can now unplug the USB cable from the USB port of the computer.

**MS Windows**  
1. Double click on the [Unplug arrow icon or Eject Hardware] icon in the system tray. Dialog box appears on the right.  
2. Highlight the [USB Mass Storage Device] in the dialog box, click on [Stop], choose the USB2.0 External Drive that you want to disconnect, then click on [Stop] again on next screen.  
3. Wait for few seconds, the system prompts "You may safely remove this device".  
4. You can now unplug the USB cable from the USB port of the computer.  
**MAC OS**  
1. Click on the [Unplug arrow icon or Eject Hardware] icon in the system tray. Dialog box appears on the right.  
2. Highlight the [USB Mass Storage Device] in the dialog box, click on [Stop], choose the USB2.0 External Drive that you want to disconnect, then click on [Stop] again on next screen.  
3. Wait for few seconds, the system prompts "You may safely remove this device".  
4. You can now unplug the USB cable from the USB port of the computer.

**MS Windows**  
1. Double click on the [Unplug arrow icon or Eject Hardware] icon in the system tray. Dialog box appears on the right.  
2. Highlight the [USB Mass Storage Device] in the dialog box, click on [Stop], choose the USB2.0 External Drive that you want to disconnect, then click on [Stop] again on next screen.  
3. Wait for few seconds, the system prompts "You may safely remove this device".  
4. You can now unplug the USB cable from the USB port of the computer.  
**MAC OS**  
1. Click on the [Unplug arrow icon or Eject Hardware] icon in the system tray. Dialog box appears on the right.  
2. Highlight the [USB Mass Storage Device] in the dialog box, click on [Stop], choose the USB2.0 External Drive that you want to disconnect, then click on [Stop] again on next screen.  
3. Wait for few seconds, the system prompts "You may safely remove this device".  
4. You can now unplug the USB cable from the USB port of the computer.

**MS Windows**  
1. Double click on the [Unplug arrow icon or Eject Hardware] icon in the system tray. Dialog box appears on the right.  
2. Highlight the [USB Mass Storage Device] in the dialog box, click on [Stop], choose the USB2.0 External Drive that you want to disconnect, then click on [Stop] again on next screen.  
3. Wait for few seconds, the system prompts "You may safely remove this device".  
4. You can now unplug the USB cable from the USB port of the computer.  
**MAC OS**  
1. Click on the [Unplug arrow icon or Eject Hardware] icon in the system tray. Dialog box appears on the right.  
2. Highlight the [USB Mass Storage Device] in the dialog box, click on [Stop], choose the USB2.0 External Drive that you want to disconnect, then click on [Stop] again on next screen.  
3. Wait for few seconds, the system prompts "You may safely remove this device".  
4. You can now unplug the USB cable from the USB port of the computer.

**MS Windows**  
1. Double click on the [Unplug arrow icon or Eject Hardware] icon in the system tray. Dialog box appears on the right.  
2. Highlight the [USB Mass Storage Device] in the dialog box, click on [Stop], choose the USB2.0 External Drive that you want to disconnect, then click on [Stop] again on next screen.  
3. Wait for few seconds, the system prompts "You may safely remove this device".  
4. You can now unplug the USB cable from the USB port of the computer.  
**MAC OS**  
1. Click on the [Unplug arrow icon or Eject Hardware] icon in the system tray. Dialog box appears on the right.  
2. Highlight the [USB Mass Storage Device] in the dialog box, click on [Stop], choose the USB2.0 External Drive that you want to disconnect, then click on [Stop] again on next screen.  
3. Wait for few seconds, the system prompts "You may safely remove this device".  
4. You can now unplug the USB cable from the USB port of the computer.

**MS Windows**  
1. Double click on the [Unplug arrow icon or Eject Hardware] icon in the system tray. Dialog box appears on the right.  
2. Highlight the [USB Mass Storage Device] in the dialog box, click on [Stop], choose the USB2.0 External Drive that you want to disconnect, then click on [Stop] again on next screen.  
3. Wait for few seconds, the system prompts "You may safely remove this device".  
4. You can now unplug the USB cable from the USB port of the computer.  
**MAC OS**  
1. Click on the [Unplug arrow icon or Eject Hardware] icon in the system tray. Dialog box appears on the right.  
2. Highlight the [USB Mass Storage Device] in the dialog box, click on [Stop], choose the USB2.0 External Drive that you want to disconnect, then click on [Stop] again on next screen.  
3. Wait for few seconds, the system prompts "You may safely remove this device".  
4. You can now unplug the USB cable from the USB port of the computer.

**MS Windows**  
1. Double click on the [Unplug arrow icon or Eject Hardware] icon in the system tray. Dialog box appears on the right.  
2. Highlight the [USB Mass Storage Device] in the dialog box, click on [Stop], choose the USB2.0 External Drive that you want to disconnect, then click on [Stop] again on next screen.  
3. Wait for few seconds, the system prompts "You may safely remove this device".  
4. You can now unplug the USB cable from the USB port of the computer.  
**MAC OS**  
1. Click on the [Unplug arrow icon or Eject Hardware] icon in the system tray. Dialog box appears on the right.  
2. Highlight the [USB Mass Storage Device] in the dialog box, click on [Stop], choose the USB2.0 External Drive that you want to disconnect, then click on [Stop] again on next screen.  
3. Wait for few seconds, the system prompts "You may safely remove this device".  
4. You can now unplug the USB cable from the USB port of the computer.

**MS Windows**  
1. Double click on the [Unplug arrow icon or Eject Hardware] icon in the system tray. Dialog box appears on the right.  
2. Highlight the [USB Mass Storage Device] in the dialog box, click on [Stop], choose the USB2.0 External Drive that you want to disconnect, then click on [Stop] again on next screen.  
3. Wait for few seconds, the system prompts "You may safely remove this device".  
4. You can now unplug the USB cable from the USB port of the computer.  
**MAC OS**  
1. Click on the [Unplug arrow icon or Eject Hardware] icon in the system tray. Dialog box appears on the right.  
2. Highlight the [USB Mass Storage Device] in the dialog box, click on [Stop], choose the USB2.0 External Drive that you want to disconnect, then click on [Stop] again on next screen.  
3. Wait for few seconds, the system prompts "You may safely remove this device".  
4. You can now unplug the USB cable from the USB port of the computer.

**MS Windows**  
1. Double click on the [Unplug arrow icon or Eject Hardware] icon in the system tray. Dialog box appears on the right.  
2. Highlight the [USB Mass Storage Device] in the dialog box, click on [Stop], choose the USB2.0 External Drive that you want to disconnect, then click on [Stop] again on next screen.  
3. Wait for few seconds, the system prompts "You may safely remove this device".  
4. You can now unplug the USB cable from the USB port of the computer.  
**MAC OS**  
1. Click on the [Unplug arrow icon or Eject Hardware] icon in the system tray. Dialog box appears on the right.  
2. Highlight the [USB Mass Storage Device] in the dialog box, click on [Stop], choose the USB2.0 External Drive that you want to disconnect, then click on [Stop] again on next screen.  
3. Wait for few seconds, the system prompts "You may safely remove this device".  
4. You can now unplug the USB cable from the USB port of the computer.

**MS Windows**  
1. Double click on the [Unplug arrow icon or Eject Hardware] icon in the system tray. Dialog box appears on the right.  
2. Highlight the [USB Mass Storage Device] in the dialog box, click on [Stop], choose the USB2.0 External Drive that you want to disconnect, then click on [Stop] again on next screen.  
3. Wait for few seconds, the system prompts "You may safely remove this device".  
4. You can now unplug the USB cable from the USB port of the computer.  
**MAC OS**  
1. Click on the [Unplug arrow icon or Eject Hardware] icon in the system tray. Dialog box appears on the right.  
2. Highlight the [USB Mass Storage Device] in the dialog box, click on [Stop], choose the USB2.0 External Drive that you want to disconnect, then click on [Stop] again on next screen.  
3. Wait for few seconds, the system prompts "You may safely remove this device".  
4. You can now unplug the USB cable from the USB port of the computer.

**MS Windows**  
1. Double click on the [Unplug arrow icon or Eject Hardware] icon in the system tray. Dialog box appears on the right.  
2. Highlight the [USB Mass Storage Device] in the dialog box, click on [Stop], choose the USB2.0 External Drive that you want to disconnect, then click on [Stop] again on next screen.  
3. Wait for few seconds, the system prompts "You may safely remove this device".  
4. You can now unplug the USB cable from the USB port of the computer.  
**MAC OS**  
1. Click on the [Unplug arrow icon or Eject Hardware] icon in the system tray. Dialog box appears on the right.  
2. Highlight the [USB Mass Storage Device] in the dialog box, click on [Stop], choose the USB2.0 External Drive that you want to disconnect, then click on [Stop] again on next screen.  
3. Wait for few seconds, the system prompts "You may safely remove this device".  
4. You can now unplug the USB cable from the USB port of the computer.

**MS Windows**  
1. Double click on the [Unplug arrow icon or Eject Hardware] icon in the system tray. Dialog box appears on the right.  
2. Highlight the [USB Mass Storage Device] in the dialog box, click on [Stop], choose the USB2.0 External Drive that you want to disconnect, then click on [Stop] again on next screen.  
3. Wait for few seconds, the system prompts "You may safely remove this device".  
4. You can now unplug the USB cable from the USB port of the computer.  
**MAC OS**  
1. Click on the [Unplug arrow icon or Eject Hardware] icon in the system tray. Dialog box appears on the right.  
2. Highlight the [USB Mass Storage Device] in the dialog box, click on [Stop], choose the USB2.0 External Drive that you want to disconnect, then click on [Stop] again on next screen.  
3. Wait for few seconds, the system prompts "You may safely remove this device".  
4. You can now unplug the USB cable from the USB port of the computer.

**MS Windows**  
1. Double click on the [Unplug arrow icon or Eject Hardware] icon in the system tray. Dialog box appears on the right.  
2. Highlight the [USB Mass Storage Device] in the dialog box, click on [Stop], choose the USB2.0 External Drive that you want to disconnect, then click on [Stop] again on next screen.  
3. Wait for few seconds, the system prompts "You may safely remove this device".  
4. You can now unplug the USB cable from the USB port of the computer.  
**MAC OS**  
1. Click on the [Unplug arrow